

Developing a Vision: I-11 / I-40 Gateway

City of Kingman

Economic Development



About Us

The City of Kingman is located in northwestern Arizona on the Colorado Plateau. Kingman is celebrated for its historic resources, transportation legacy along Historic Route 66, and proximity to regional recreational assets.

The City is examining connectivity, visibility, and traveler engagement within the I-11/I-40 gateway amid evolving traffic patterns, signage changes, and interchange planning.



Project

We aim to identify planning, design, and placemaking strategies that encourage interstate travelers to exit and engage with downtown rather than bypass it.

MUEP students will evaluate existing conditions related to:

- Land use planning
- Multimodal access
- Trail connectivity
- Historic resources
- Recreational assets
- Gateway Signage/Billboards



I-11 / I-40 / US93 West Kingman Traffic Interchange

Construction started in July 2024 on a new Interchange that will create a free-flowing connection between I-40 and US93, without stopping at a ramp intersection. ADOT Project information is available at the link below:

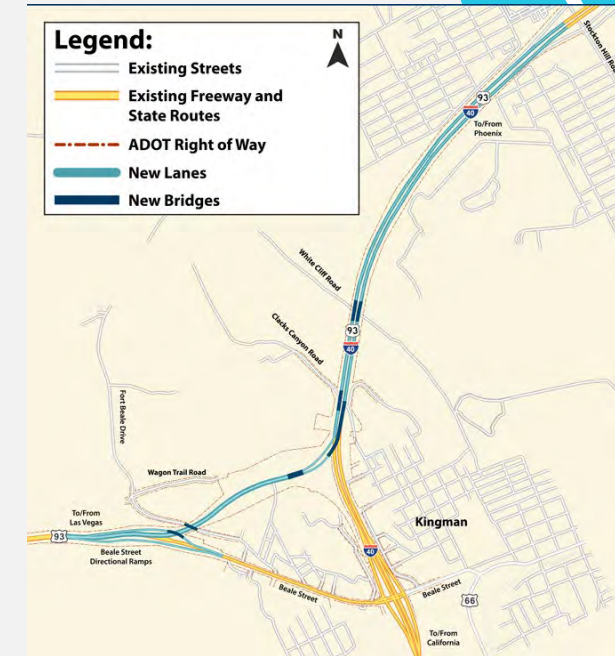
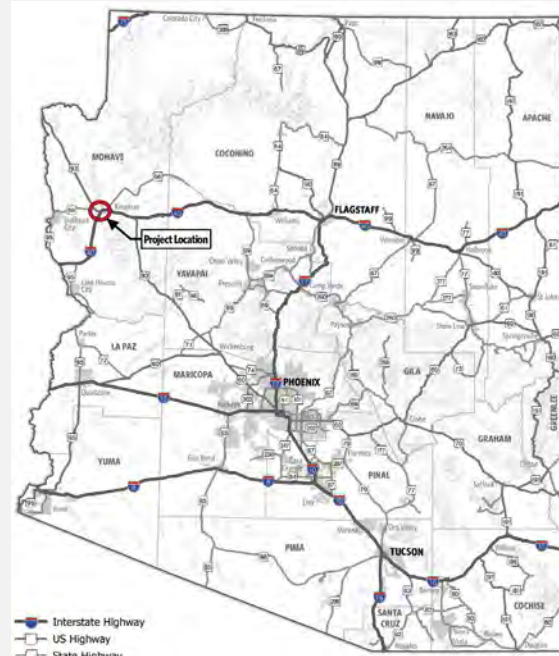
<https://azdot.gov/projects/northwest-district-projects/i-40us-93-west-kingman-traffic-interchange#section-5>

Project Info

- Increasing traffic growth and congestion – Las Vegas, Grand Canyon, Route 66/Kingman.
- Address existing traffic backups and delays on I-40 and US 93.
- Relieve traffic congestion on Beale Street
- Improve travel between I-40 and US 93

Project Timeline

- Feasibility Study in 2007
- Preferred Corridor in 2009
- Design Concept Report 2015
- Environmental Assessment 2020



Project timeline



Current Progress:

- Controlled rock blasting on I-40.
- Sound wall installation.

- Bridge girder placement over I-40 coming soon.
- Work on south-to-east flyover bridge from southbound to US 93 to eastbound I-40.



Project progress photo – January 7th, 2026



New Alignment

Existing Alignment

Project Area

Kingman

Project Area

Existing Gateway
& Gateway Corridor

Kingman
Downtown
Improvement
District



Gateway Corridor

Downtown Improvement District



Trailheads *

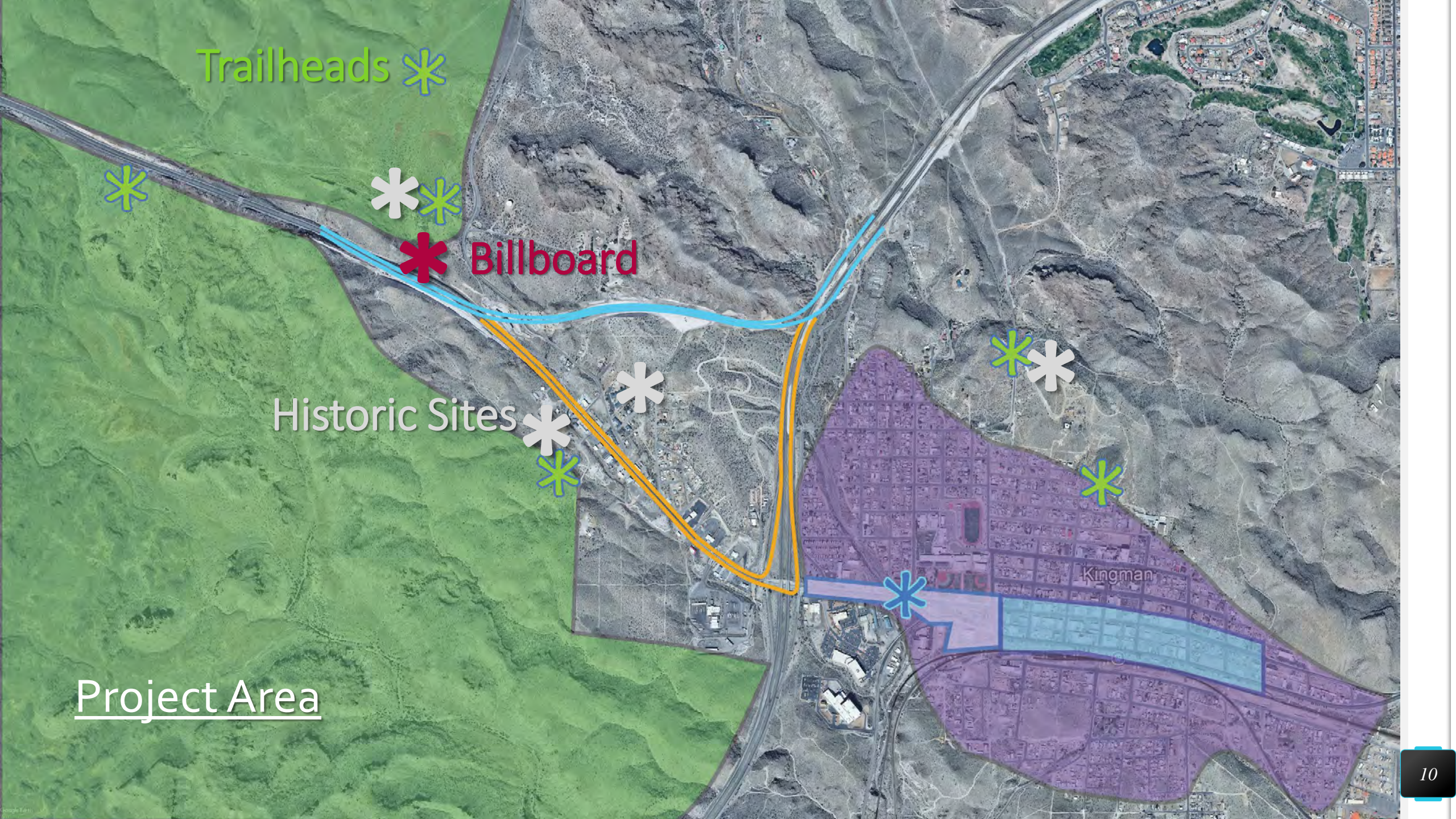


Billboard

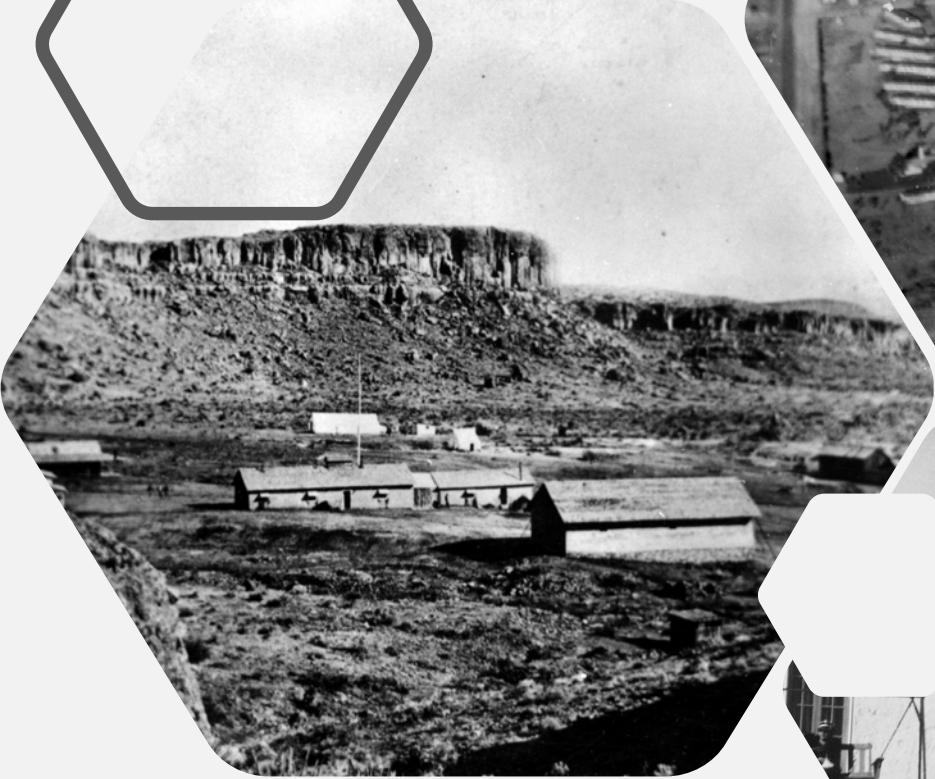
Historic Sites *



Project Area



Historic Sites



Trailheads/Recreation



Billboards/Signage Opportunity



Project Goals

Through peer community research, stakeholder interviews, and targeted surveys, students will identify strategies that leverage recreation, heritage, retail opportunities, and gateway visibility to support downtown-focused economic development.

The project will culminate in a set of research-informed planning and policy recommendations that:

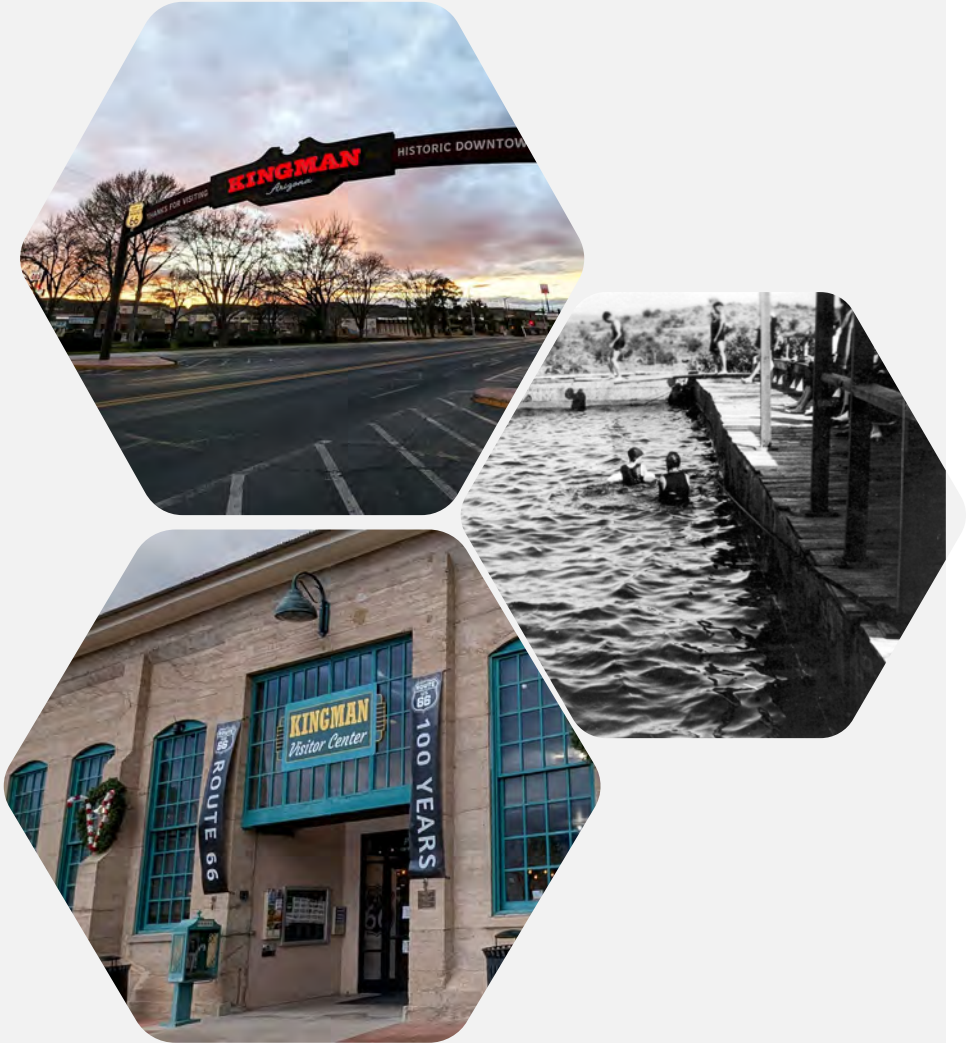
- Strengthen connections between the interstate gateway and downtown
- Preserve historic culture and regional identity
- Position Kingman to capture visitor interest and economic activity



Project Goals


Report Deliverable shall address:


- Evaluate multimodal, trail, and wayfinding conditions to identify strategies that improve connectivity between the I-11/I-40 gateway and downtown Kingman.
- Assess how historic resources and recreational assets can be leveraged to support heritage-compatible land use, retail opportunities, and downtown-oriented economic development.
- Examine gateway visibility, signage, and placemaking approaches to determine how interstate travelers can be encouraged to exit and engage with downtown Kingman.
- Analyze the potential economic impacts of proposed connectivity, gateway, and placemaking improvements.





Thank You

 Jeremy Palmer

 928.418.6776

 jpalmer@cityofkingman.gov

 www.choosekingman.com